

NEWS RELEASE

Roscan Gold Continues to Expand and Upgrade the Kandiole North Discovery with a 2,000m Strike Length and 92m Depth that Remains Open. Intersects 4.13gpt over 10m and 5.43gpt over 7m.

Toronto, Ontario. – March 11, 2021 – Roscan Gold Corporation (“Roscan” or the “Company”) (TSX-V: ROS; FSE:2OJ; OTC:RCGCF) is pleased to announce the positive drill results at the Kandiole North discovery where the mineralized zone is expanding in size. (Figure 1 and Figure 2). We continue to increase depth extension and strike length at Kandiole North with high grade intercepts and the mineralized zones remain open. We have extended gold mineralization down to 92m depth at Kandiole North (Figure 3 and Figure 4).

The Kandiole North (KN1) gold mineralization trend appears to extend for 8km to Moussala (MO1) (Figures 1 & 2) and Kandiole North (KN2) gold mineralization trend appears to extend for 6km to Kabaya (Figures 1 & 2). Drilling at Kabaya is ongoing with the aim to connect these targets and expand its current dimensions. Both Kabaya, Kandiole North and Moussala remains open along strike and depth.

The mineralized corridor trends N020 with steep easterly dips but within the corridor, there are E-W domains with steep north dipping quartz veins that carry the best gold grades (Figure 6). On the section (Figure 3), the mineralization appears to dip 45° NE but if these intersections correspond to E-W domains (Figure 7), then true widths are in the order of 20m and 10m for the two zones interpreted and dips are about 65°N.

Drilling Highlights:

KANDIOLE NORTH - DD AND RC Holes

- 6.67 gpt gold over 4m from drill hole RCKAN21-010 from 116m (End of hole)
 - Including 21.9 gpt gold over 1m from 117m
- 5.43 gpt gold over 7m from drill hole RCKAN21-003 from 69m
 - Including 21.9 gpt gold over 1m from 73m
- 4.13 gpt gold over 10m from drill hole RCKAN21-002 from 90m
 - Including 25.8 gpt gold over 1m from 92m
 - And 3.13 gpt gold over 7m from drill hole RCKAN21-002 from 50m
 - Including 12.0 gpt gold over 1m from 52 m
- 2.60 gpt gold over 9m from drill hole RCKAN21-011 from 27m
 - And 1.91 gpt gold over 11m from drill hole RCKAN21-011 from 65m
 - Including 10.0 gpt gold over 1m from 72m

KANDIOLE NORTH (KN1) AC

- 9.30 gpt gold over 4m from drill hole ACKAN20-1223 from 14m
 - Including 18.0 gpt gold over 2m from 16m
- 4.28 gpt gold over 6m from drill hole ACKAN20-1233 from 8m
- 3.37 gpt gold over 8m from drill hole ACKAN20-842 from 30m
 - Including 15.7 gpt gold over 1m from 31m

KANDIOLE NORTH (KN4) - AC Holes

- 4.91 gpt gold over 4m from drill hole ACKAN20-1380 from 10m (End of hole)

KANDIOLE NORTH (Regional)

- 9.79 gpt gold over 2m from drill hole ACKAN20-1105 from 10m

Notes: 1: True width yet to be determined, 2: Table 1 – Assay Highlights, 3: 0.5gpt used as cut-off with 2m internal dilution, 4: No top-cut.

Nana Sangmuah, President and CEO, stated, "Kandiole North has been returning some great results and shaping up to be a key deposit for resource definition with 2km strike length and 92m depth and remains open for further expansion along strike and at depth. Numerous holes ended in mineralization clearly showing the potential at depth. We are confident that this resource will play a crucial role in adding significant value to our company building on top of our flagship discoveries of Mankouke South and Kabaya.

The continued drilling success on our numerous regional targets is proving the potential to add ounces from multiple targets on our large land package. We are also seeing encouraging results from our other regional discoveries made in late 2020 including Walia and Moussala North and we look forward to providing updates on those in the near future as more assays become available.

The potential for numerous mineralized corridors on the property over long strike lengths is being further validated by our recent regional exploration success and step out drilling outside of Mankouke South with hole 89 released earlier this week, we are looking forward to sharing the full results of our extensive geophysics survey in the coming weeks which will further show the clear regional potential for a multi million oz mining camp at Kandiole.

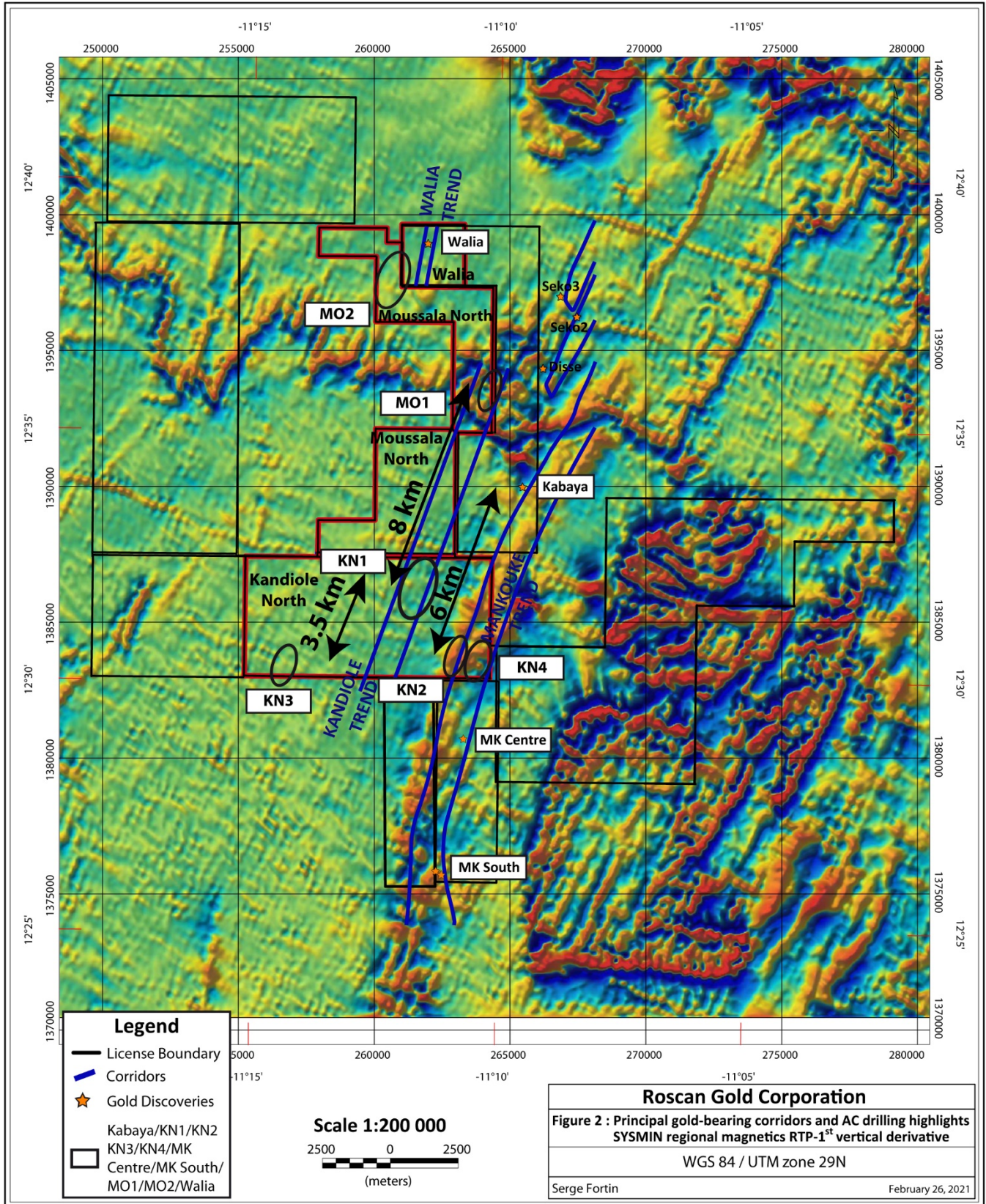


Figure 1: Plan View of the Regional Targets

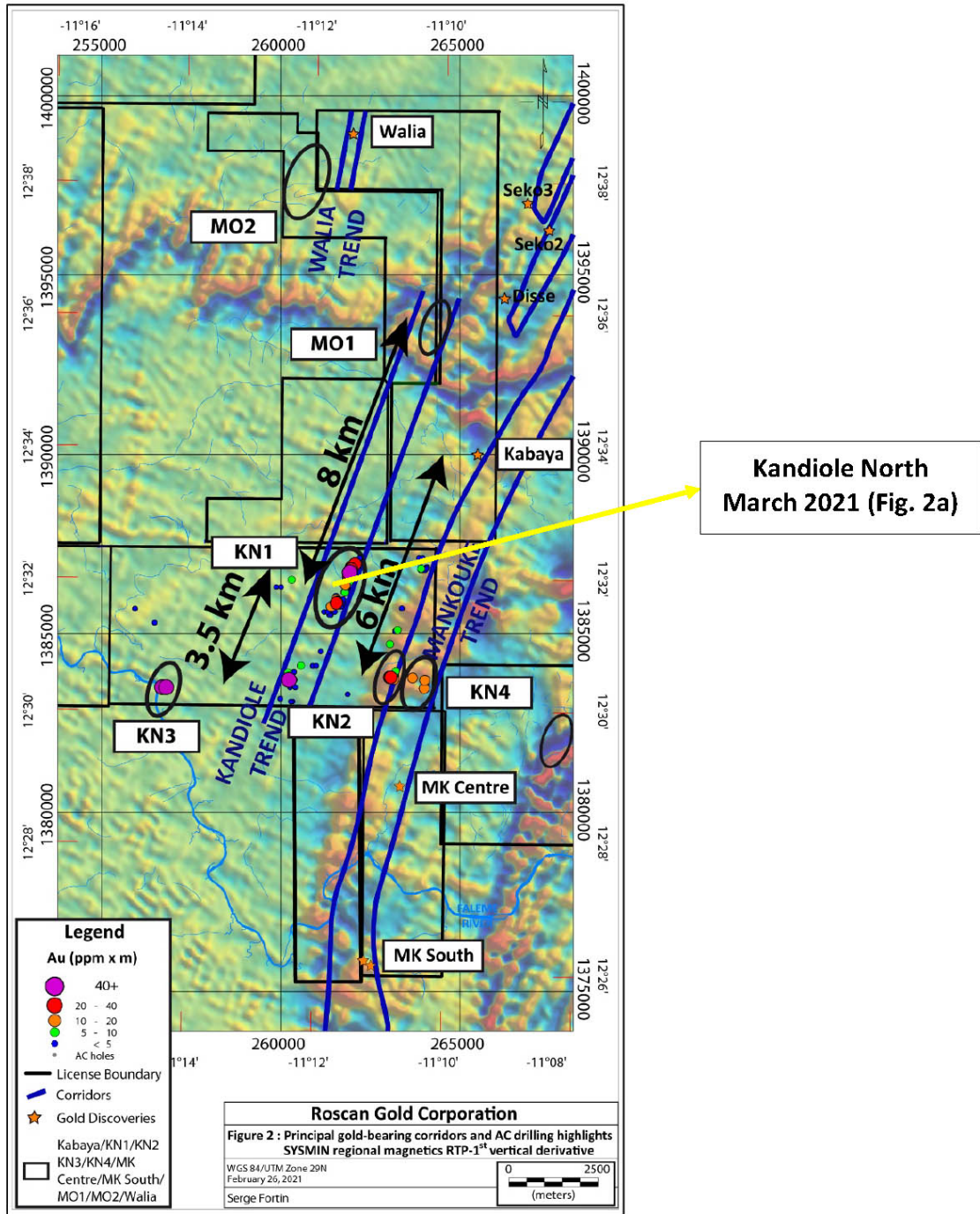


Figure 2: Plan View of the Major Trends on our Regional Targets

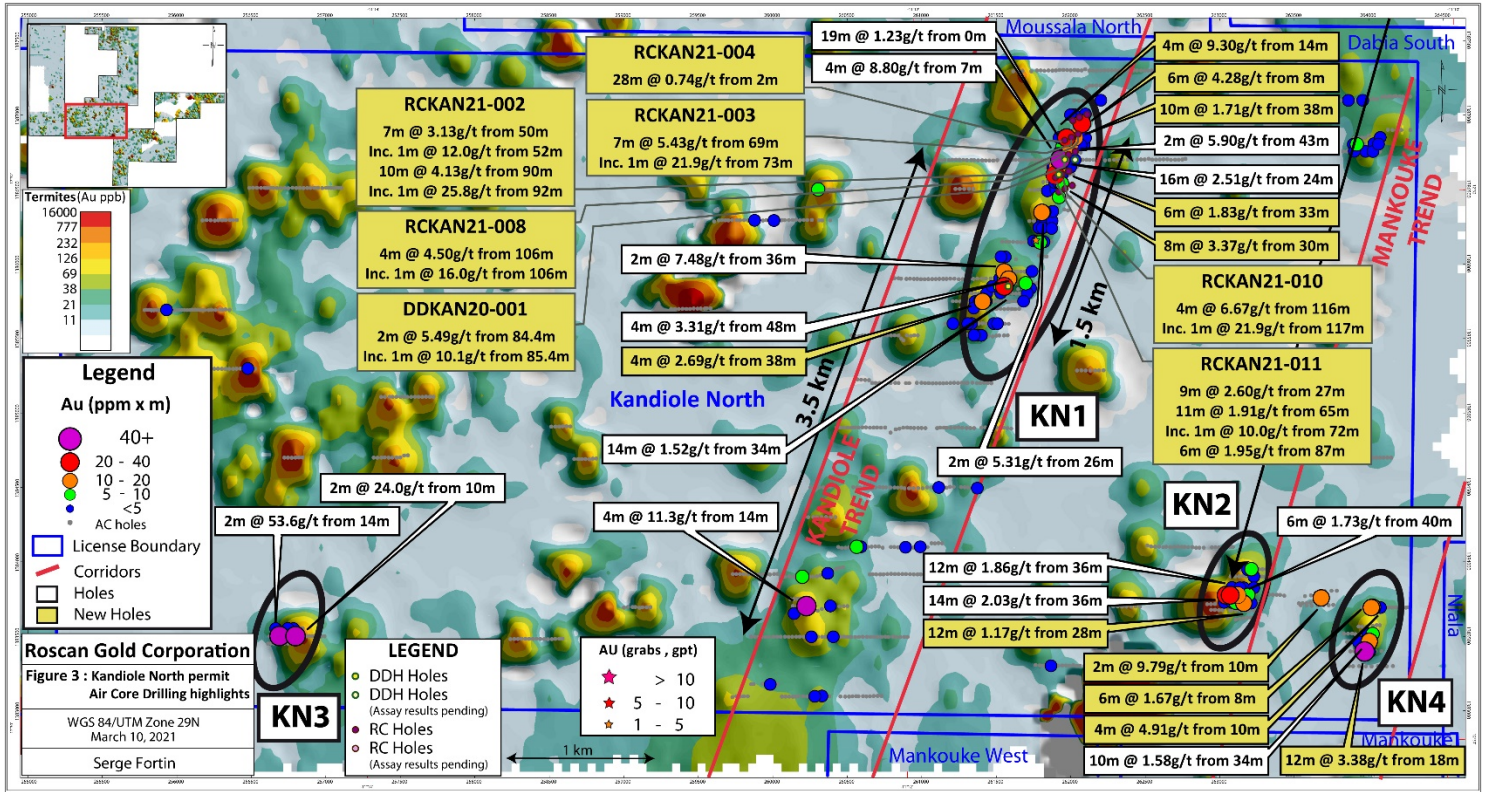


Figure 2a: Plan View showing high grades at Kandiole North with Strike Length 2km

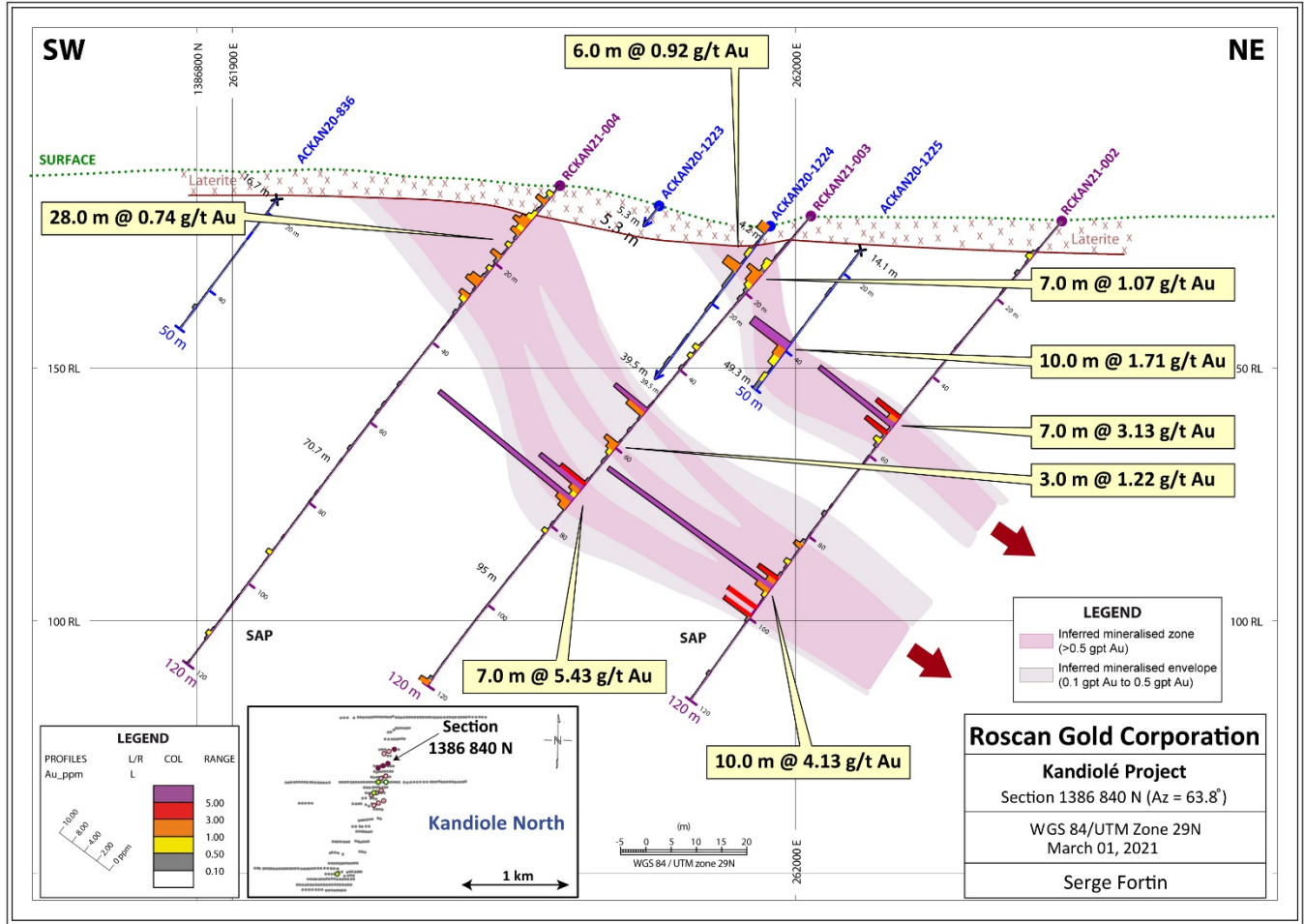


Figure 3: Cross Section at Kandiolé North Depicting the Depth Potential

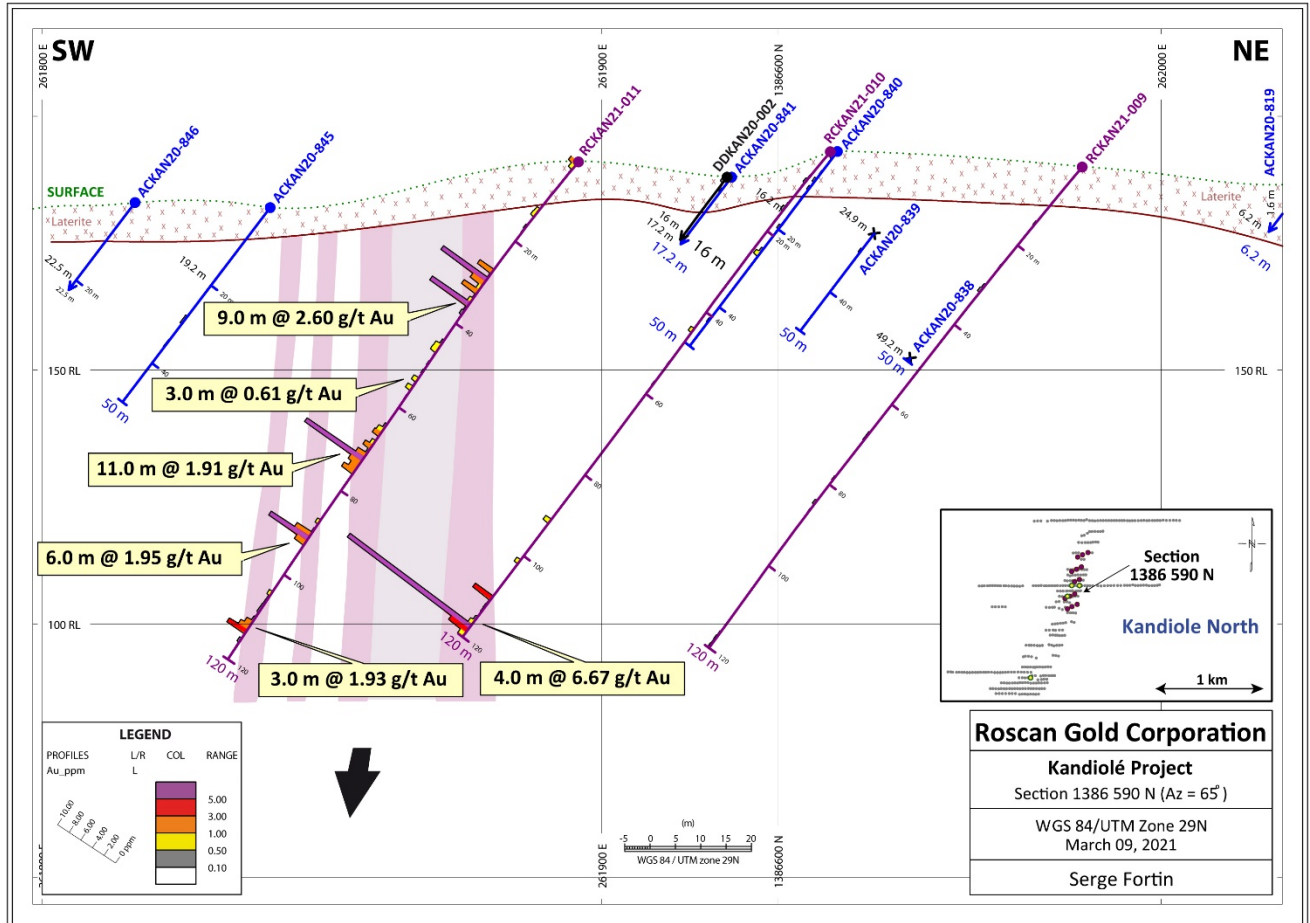


Figure 4: Cross Section at Kandiole North Depicting the Depth Potential

- At Kandiole North we continue to hit very good grades and increase the dimensions of the targets. Hole RCKAN21-002 when coupled with previously high-grade drill holes, shows the persistent nature of the resource and in fresh rock. Figures 3 and 4 clearly shows the mineralized zone remains open at depth.

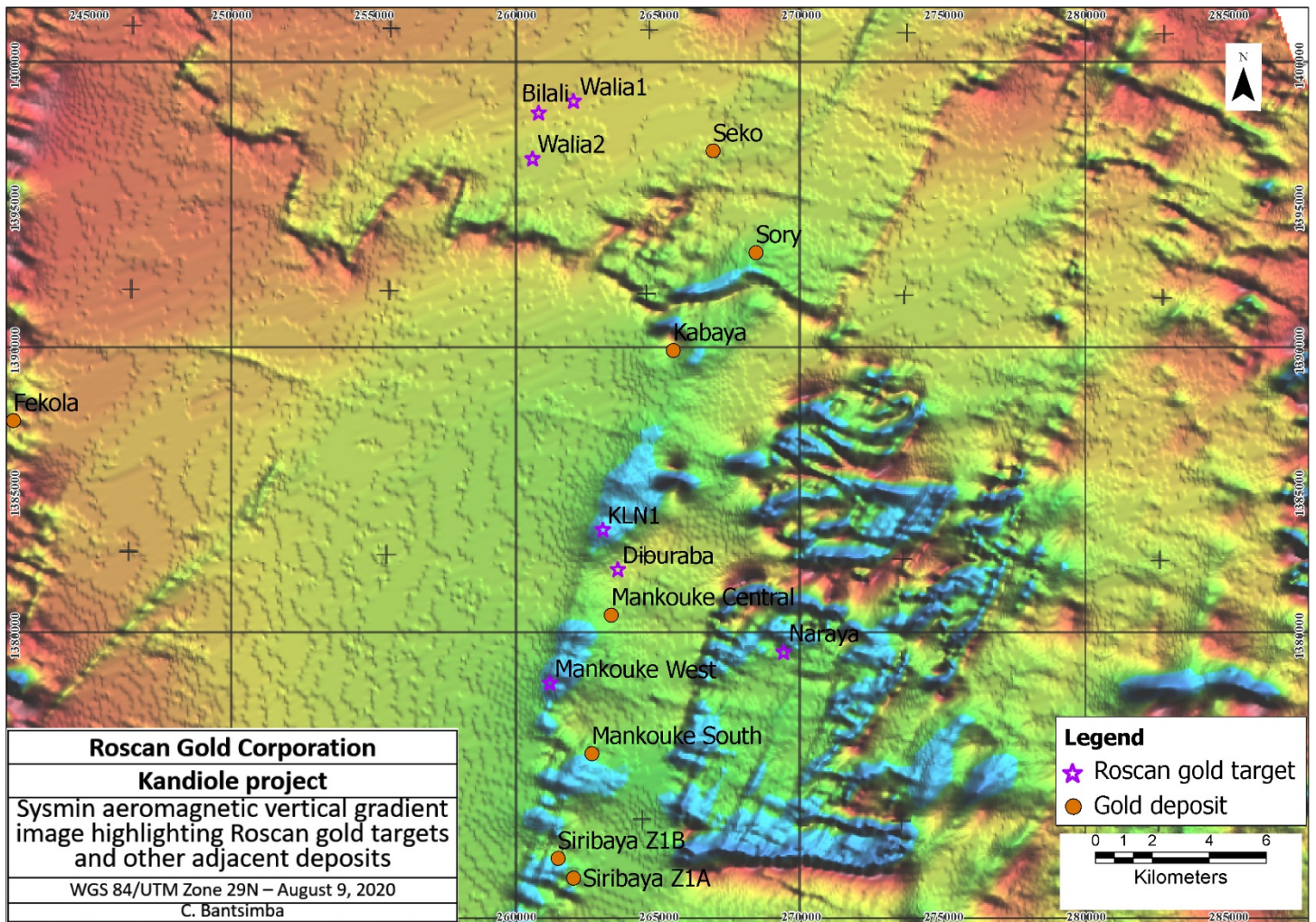


Figure 5: Geophysics data showing the major structure on Kandiole Project

- We are continuing to drill our flagship projects namely Mankouke South and Kabaya, and drilling is also continuing on **regional targets** which are giving us some excellent results. – it is anticipated we will follow up on expanding and growing key targets.

Geology

The gold mineralization at Kandiole Project is located approximately 25km east of the Fekola mine (B2Gold Corp.). Gold mineralization in Kandiole Project occurs within hydrothermally altered and sheared metasediments of the Kofi formation which include greywacke, limestone and diamictite.

KANDIOLE KN1

Kandiole North has been upgraded from target status to a confirmed zone of mineralization where continuity both along strike and to depth exists. We will continue to drill to build on this mineralization from the initial round of drilling. KN1 alteration in the mineralized saprolite suggests a disseminated pyrite + quartz vein deposit (Figure 5).



Figure 6: Drill Core Photo at Kandiole North Showing High Grades (DDKAN20-001)



Figure 7: Small Scale Miners at Kandiole North

Drilling Contract and Analytical Protocol

The drilling contracts were awarded to Target Drilling SARL and Geodrill, who both employ multi-purpose (AC/RC/DD) rig and AC rigs, at the Kandiole Project. The AC drilling is mainly focused on drilling exploration targets. Roscan applied industry-standard QA/QC procedures to the program. Certified reference materials, blanks and field duplicates are inserted at appropriate intervals.

The samples are sent for preparation to Bureau Veritas Mineral Laboratories in Bamako, Mali and assayed at their analytical facilities in Bamako and in Abidjan, Ivory Coast with fire assay with atomic absorption finish and by gravimetric finish for grades above 10gpt Au.

Table 1: Drillhole Highlights of Kandiole North (March 11, 2021)

Hole ID	From (m)	To (m)	Interval (m)	gpt Au	Comment
KANDIOLE NORTH DD AND RC - KN1					<i>Saprolite unless otherwise noted</i>
DDKAN20-001	60.4	67.4	7	1.31	
	74.4	75.4	1	6.84	
	78.4	79.4	1	0.97	
	84.4	86.4	2	5.49	
including	85.4	86.4	1	10.1	
	89.4	91.4	2	2.81	
	94.4	95.4	1	0.51	
	104.4	105.4	1	0.63	
DDKAN20-002	32.5	33.5	1	0.64	
	54.5	59.5	5	1.21	
	66.5	67.5	1	1.24	
	70.5	71.5	1	0.90	
	74.5	77.5	3	1.33	
	80.5	81.5	1	0.50	
	109.5	110.5	1	0.52	
	127.5	128.5	1	0.55	
DDKAN20-003					NSR
DDKAN21-004	9.0	10.0	1	5.55	
	19.0	20.0	1	1.28	Assays pending from 22m
	38.0	39.0	1	0.57	
RCDDKAN21-05	188.4	189.4	1	0.88	FRESH
					Assays pending starting 291m to EOH at 320m
RCKAN21-001	50.0	51.0	1	4.73	
	73.0	74.0	1	1.64	
RCKAN21-002	9.0	10.0	1	0.72	
	50.0	57.0	7	3.13	
including	52.0	53.0	1	12.0	
	82.0	83.0	1	1.09	
	86.0	87.0	1	0.72	
	90.0	100.0	10	4.13	
including	92.0	93.0	1	25.8	
RCKAN21-003	12.0	19.0	7	1.07	
	34.0	35.0	1	0.77	
	36.0	37.0	1	0.54	
	50.0	52.0	2	3.89	
	59.0	62.0	3	1.22	
	69.0	76.0	7	5.43	
including	73.0	74.0	1	21.9	
	81.0	82.0	1	0.60	
	119.0	120.0	1	1.40	END OF THE HOLE

RCKAN21-004	2.0	30.0	28	0.74	
	92.0	93.0	1	0.66	
	111.0	112.0	1	0.56	
RCKAN21-005	119	120	1	1.26	END OF THE HOLE
RCKAN21-006	1.0	2.0	1	0.85	LAT
	64.0	65.0	1	0.98	
RCKAN21-007	38.0	39.0	1	0.57	
RCKAN21-008	98.0	100.0	2	1.37	
	106.0	110.0	4	4.50	
including	106.0	107.0	1	16.0	
RCKAN21-010	44.0	45.0	1	0.57	
	91.0	92.0	1	0.99	
	101.0	102.0	1	0.67	
	110.0	111.0	1	3.17	
	116.0	120.0	4	6.67	END OF THE HOLE
including	117.0	118.0	1	21.9	
RCKAN21-011	0.0	2.0	2	1.04	
	12.0	14.0	2	0.62	
	27.0	36.0	9	2.60	
	45.0	47.0	2	0.97	
	53.0	56.0	3	0.61	
	65.0	76.0	11	1.91	
including	72.0	73.0	1	10.0	
	87.0	93.0	6	1.95	
	104.0	105.0	1	0.55	
	111.0	114.0	3	1.93	
RCKAN21-012	74.0	75.0	1	0.50	
	76.0	77.0	1	0.60	
RCKAN21-013	15.0	16.0	1	3.56	
	68.0	69.0	1	0.70	
	93.0	94.0	1	2.18	
	105.0	106.0	1	1.10	
	108.0	109.0	1	0.59	
RCKAN21-014	13.0	14.0	1	2.13	
	117.0	118.0	2	1.05	
KANDIOLE NORTH AC RESULTS - KN1					
ACKAN20-814	1.0	3.0	2	1.4	LAT
	8.0	10.0	2	0.72	LAT
	29.0	30.0	1	0.81	
	33.0	39.0	6	1.83	
ACKAN20-840	26.0	27.0	1	0.79	
ACKAN20-841	19.0	20.0	1	0.78	
	47.0	48.0	1	0.82	
ACKAN20-842	1.0	2.0	1	2.48	LAT

	12.0	13.0	1	0.58	
	30.0	38.0	8	3.37	
including	31.0	32.0	1	15.7	
	41.0	42.0	1	1.21	
ACKAN20-843	11.0	15.0	4	0.54	
	40.0	41.0	1	0.57	
ACKAN20-929	8.0	10.0	2	1.03	
ACKAN20-930	16.0	18.0	2	0.63	
ACKAN20-937	40.0	42.0	2	0.64	
ACKAN20-938	16.0	18.0	2	3.86	
ACKAN20-939	6.0	8.0	2	0.77	
	16.0	18.0	2	0.64	
ACKAN20-940	28.0	30.0	2	0.86	
ACKAN20-1000	18.0	20.0	2	0.54	
ACKAN20-1212	10.0	12.0	2	0.68	
ACKAN20-1221	0.0	6.0	6	0.64	LAT
ACKAN20-1223	14.0	18.0	4	9.30	
including	16.0	18.0	2	18.0	
	22.0	24.0	2	1.11	
	30.0	32.0	2	0.68	
ACKAN20-1224	6.0	12.0	6	0.92	
	44.0	48.0	4	2.36	
ACKAN20-1225	6.0	14.0	8	1.26	
	38.0	48.0	10	1.71	
including	38.0	40.0	2	5.74	
ACKAN20-1226	40.0	46.0	6	1.00	
ACKAN20-1227	8.0	12.0	4	1.49	
	16.0	20.0	4	0.59	
ACKAN20-1228	40.0	42.0	2	1.73	
ACKAN20-1230	28.0	30.0	2	0.64	
ACKAN20-1231	48.0	50.0	2	0.95	END OF THE HOLE
ACKAN20-1233	8.0	14.0	6	4.28	
	18.0	20.0	2	1.36	
	32.0	34.0	2	0.73	
	42.0	44.0	2	4.01	
ACKAN20-1234	0.0	2.0	2	2.03	LAT
	12.0	14.0	2	0.79	
ACKAN20-1244	0.0	2.0	2	1.57	LAT
ACKAN20-1246	18.0	20.0	2	1.28	
	26.0	28.0	2	0.51	
	46.0	48.0	2	1.72	
ACKAN20-1250	14.0	16.0	2	1.12	
ACKAN20-1257	48.0	50.0	2	0.54	END OF THE HOLE
ACKAN20-1262	14.0	16.0	2	0.51	

	28.0	30.0	2	3.96	
ACKAN20-1301	26.0	28.0	2	0.61	
ACKAN20-1307	36.0	38.0	2	0.95	
ACKAN20-1308	16.0	18.0	2	0.62	
ACKAN20-1316	26.0	28.0	2	0.55	
ACKAN20-1318	20.0	22.0	2	1.14	
	34.0	36.0	2	0.89	
ACKAN20-1333	26.0	28.0	2	1.01	
ACKAN20-1334	6.0	8.0	2	0.51	
	38.0	42.0	4	2.69	
ACKAN20-1335	32.0	34.0	2	0.84	
ACKAN20-1336	8.0	10.0	2	1.38	
KANDIOLE NORTH AC RESULTS - KN2					
ACKAN20-1121	26.0	28.0	2	0.87	
ACKAN20-1123	12.0	14.0	2	0.94	
	28.0	40.0	12	1.17	
ACKAN20-1124	0.0	2.0	2	1.29	LAT
	22.0	26.0	4	0.82	
	36.0	46.0	10	0.69	
ACKAN20-1125	6.0	8.0	2	0.96	LAT
	44.0	50.0	6	1.05	END OF THE HOLE
ACKAN20-1126	4.0	6.0	2	0.50	LAT
	22.0	24.0	2	0.93	
ACKAN20-1178	42.0	44.0	2	0.61	
ACKAN20-1179	42.0	44.0	2	0.55	
	48.0	50.0	2	2.89	END OF THE HOLE
ACKAN20-1180	32.0	34.0	2	0.63	
	46.0	48.0	2	0.69	
ACKAN20-1183	20.0	22.0	2	1.79	
ACKAN20-1184	14.0	16.0	2	0.85	
	36.0	38.0	2	0.94	
	42.0	44.0	2	0.65	
ACKAN20-1186	28.0	30.0	2	0.67	
	40.0	42.0	2	1.91	
ACKAN20-1218	16.0	18.0	2	0.59	
ACKAN20-1219	10.0	22.0	12	0.72	
KANDIOLE NORTH AC RESULTS - KN4					
ACKAN20-1375	20.0	22.0	2	0.97	
ACKAN20-1380	10.0	14.0	4	4.91	END OF THE HOLE
ACKAN20-1381	8.0	14.0	6	1.67	END OF THE HOLE
KNR (REGIONAL)					
ACKAN20-800	22.0	24.0	2	0.76	
ACKAN20-874	6.0	8.0	2	0.93	
ACKAN20-880	34.0	36.0	2	0.79	

ACKAN20-884	20.0	24.0	4	1.03	
	48.0	50.0	2	0.75	END OF THE HOLE
ACKAN20-917	22.0	24.0	2	2.74	
ACKAN20-968	18.0	20.0	2	0.81	
ACKAN20-974	2.0	4.0	2	0.78	LAT
ACKAN20-1063	8.0	10.0	2	1.52	
ACKAN20-1105	10.0	12.0	2	9.79	
ACKAN20-1128	20.0	22.0	2	0.53	
ACKAN20-1133	42.0	44.0	2	1.00	
ACKAN20-1152	28.0	30.0	2	0.65	
ACKAN20-1167	42.0	44.0	2	1.94	
ACKAN20-1265	22.0	26.0	4	1.70	
ACKAN20-1266	30.0	32.0	2	0.94	
ACKAN20-1269	14.0	16.0	2	0.51	
ACKAN20-1270	14.0	22.0	8	0.60	
ACKAN20-1312	16.0	18.0	2	0.74	
ACKAN20-1355	30.0	32.0	2	0.55	
ACKAN20-1356	12.0	16.0	4	1.42	

Table 2: Drillhole ID of Kandiole North (March 11, 2021)

Hole ID	X Collar	Y Collar	Z Collar	Section	AZM	DIP
KANDIOLE NORTH DD AND RC RESULTS - KN1						
DDKAN20-001	261960	1386701	189	1386700	270	-50
DDKAN20-002	261920	1386601	188	1386600	270	-50
DDKAN20-003	261580	1385850	199	1385850	300	-50
DDKAN21-004	262031	1386700	191	1386700	270	-50
RCDDKAN21-005	262029	1386700	191	1386700	270	-50
RCKAN21-001	262109	1387004	173		245	-50
RCKAN21-002	262049	1386872	179		245	-50
RCKAN21-003	262004	1386851	180		245	-50
RCKAN21-004	261959	1386830	186		245	-50
RCKAN21-005	262059	1386984	164		245	-50
RCKAN21-006	262014	1386963	183		245	-50
RCKAN21-007	262030	1386756	183		245	-50
RCKAN21-008	261985	1386735	190		245	-50
RCKAN21-010	261942	1386602	193		245	-50
RCKAN21-011	261897	1386581	191		245	-50
RCKAN21-012	262010	1386527	167		245	-50
RCKAN21-013	261962	1386506	203		245	-50
RCKAN21-014	261920	1386485	209		245	-50
KANDIOLE NORTH AC RESULTS - KN1						
ACKAN20-814	261910	1386649	189	1386650	270	-50
ACKAN20-840	261944	1386601	197	1386600	270	-50

ACKAN20-841	261921	1386601	188	1386600	270	-50
ACKAN20-842	261896	1386598	186	1386600	270	-50
ACKAN20-843	261871	1386599	189	1386600	270	-50
ACKAN20-929	261560	1386048	211	1386050	270	-50
ACKAN20-930	261532	1386049	213	1386050	270	-50
ACKAN20-937	261820	1386149	185	1386150	270	-50
ACKAN20-938	261795	1386145	184	1386150	270	-50
ACKAN20-939	261775	1386150	183	1386150	270	-50
ACKAN20-940	261750	1386155	178	1386150	270	-50
ACKAN20-1000	261508	1385600	201	1385600	270	-50
ACKAN20-1212	261708	1385803	208	1385800	270	-50
ACKAN20-1221	261922	1386849	177	1386850	270	-50
ACKAN20-1223	261972	1386848	182	1386850	270	-50
ACKAN20-1224	261996	1386849	178	1386850	270	-50
ACKAN20-1225	262025	1386849	184	1386850	270	-50
ACKAN20-1226	262053	1386848	185	1386850	270	-50
ACKAN20-1227	262076	1386847	189	1386850	270	-50
ACKAN20-1228	262099	1386847	188	1386850	270	-50
ACKAN20-1230	261998	1387002	179	1387000	270	-50
ACKAN20-1231	262023	1387002	178	1387000	270	-50
ACKAN20-1233	262074	1386942	179	1386950	270	-50
ACKAN20-1234	262098	1387007	170	1387000	270	-50
ACKAN20-1244	262202	1387100	164	1387100	270	-50
ACKAN20-1246	261530	1385806	198	1385800	270	-50
ACKAN20-1250	261435	1385803	199	1385800	270	-50
ACKAN20-1257	261872	1386239	178	1386250	270	-50
ACKAN20-1262	261921	1386450	197	1386450	270	-50
ACKAN20-1301	261483	1385600	202	1385600	270	-50
ACKAN20-1307	261334	1385600	196	1385600	270	-50
ACKAN20-1308	261309	1385600	204	1385600	270	-50
ACKAN20-1316	261683	1385750	207	1385750	270	-50
ACKAN20-1318	261740	1385951	195	1385950	270	-50
ACKAN20-1333	261433	1385750	205	1385750	270	-50
ACKAN20-1334	261408	1385749	197	1385750	270	-50
ACKAN20-1335	261385	1385750	197	1385750	270	-50
ACKAN20-1336	261358	1385749	198	1385750	270	-50
KANDIOLE NORTH AC RESULTS - KN2						
ACKAN20-1121	263211	1383723	185	1383725	270	-50
ACKAN20-1123	263161	1383722	187	1383725	270	-50
ACKAN20-1124	263126	1383726	177	1383725	270	-50
ACKAN20-1125	263106	1383726	181	1383725	270	-50
ACKAN20-1126	263083	1383727	183	1383725	270	-50
ACKAN20-1178	263187	1383948	175	1383950	270	-50
ACKAN20-1179	263212	1383951	179	1383950	270	-50

ACKAN20-1180	263229	1383826	181	1383825	270	-50
ACKAN20-1183	263161	1383826	183	1383825	270	-50
ACKAN20-1184	263135	1383826	188	1383825	270	-50
ACKAN20-1186	263081	1383828	183	1383825	270	-50
ACKAN20-1218	263167	1383777	182	1383780	270	-50
ACKAN20-1219	263192	1383779	186	1383780	270	-50
KANDIOLE NORTH AC RESULTS - KN4						
ACKAN20-1375	264078	1383693	172	1383695	270	-50
ACKAN20-1380	264026	1383696	167	1383695	270	-50
ACKAN20-1381	264017	1383693	167	1383695	270	-50
KNR (REGIONAL)						
ACKAN20-800	260143	1383653	147	1383650	270	-50
ACKAN20-874	261114	1384500	194	1384500	270	-50
ACKAN20-880	260990	1384101	192	1384100	270	-50
ACKAN20-884	260891	1384098	194	1384100	270	-50
ACKAN20-917	263048	1384700	200	1384700	270	-50
ACKAN20-968	260406	1383497	151	1383500	270	-50
ACKAN20-974	260259	1383497	155	1383500	270	-50
ACKAN20-1063	261373	1384495	194	1384500	270	-50
ACKAN20-1105	263681	1383758	162	1383750	270	-50
ACKAN20-1128	263929	1383464	191	1383465	270	-50
ACKAN20-1133	260282	1383097	195	1383100	270	-50
ACKAN20-1152	259983	1383177	156	1383175	270	-50
ACKAN20-1167	260330	1383099	134	1383100	270	-50
ACKAN20-1265	263920	1386804	201	1386800	270	-50
ACKAN20-1266	263896	1386804	198	1386800	270	-50
ACKAN20-1269	263903	1386757	193	1386750	270	-50
ACKAN20-1270	263979	1386756	202	1386750	270	-50
ACKAN20-1312	261209	1385600	196	1385600	270	-50
ACKAN20-1355	260592	1384101	182	1384100	270	-50
ACKAN20-1356	260563	1384101	182	1384100	270	-50

Table 3: Grab Sample Results (March 11, 2021)

Sample ID	X Collar	Y Collar	Lithocode	Au gpt	Strike	Dip
KANDIOLE NORTH KN1 GRAB SAMPLING RESULTS						
KNR-189173	261766	1386160	VQZ	1.519	290	80
KNR-189174	261771	1386165	VQZ	0.767	300	80
KNR-189175	261755	1386127		0.115		
KNR-189176	261754	1386126	VQZ	0.467	295	80
KNR-189177	261993	1399406	VQZ	0.03	320	60

Qualified Person (QP) and NI43-101 Disclosure

Greg Isenor, P. Geo., Executive Vice-Chairman for the Company, is the designated Qualified Person for this news release within the meaning of National Instrument 43-101 (“NI 43-101”) and has reviewed and verified that the technical information contained herein is accurate and approves of the written disclosure of same.

About Roscan

Roscan Gold Corporation is a Canadian gold exploration company focused on the exploration and acquisition of gold properties in West Africa. The Company has assembled a significant land position of 100%-owned permits in an area of producing gold mines (including B2 Gold’s Fekola Mine which lies in a contiguous property to the west of Kandiole), and major gold deposits, located both north and south of its Kandiole Project in West Mali.

For further information, please contact:

Dr. Andrew J. Ramcharan, P.Eng

Executive Vice President – Corporate Development & Investor Relations

Tel: (416) 572-2295

Email: aramcharan@Roscan.ca

Greg Isenor, P.Geo

Executive Vice-Chairman

Tel: (902) 221-2329

Email: gpisenor@Roscan.ca

Forward Looking Statements

This news release contains forward-looking information which is not comprised of historical facts. Forward-looking information is characterized by words such as “plan”, “expect”, “project”, “intend”, “believe”, “anticipate”, “estimate” and other similar words, or statements that certain events or conditions “may” or “will” occur. Forward-looking information involves risks, uncertainties and other factors that could cause actual events, results, and opportunities to differ materially from those expressed or implied by such forward-looking information. Factors that could cause actual results to differ materially from such forward-looking information include, but are not limited to, changes in the state of equity and debt markets, fluctuations in commodity prices, delays in obtaining required regulatory or governmental approvals, and other risks involved in the mineral exploration and development industry, including those risks set out in the Company’s management’s discussion and analysis as filed under the Company’s profile at www.sedar.com. Forward-looking information in this news release is based on the opinions and assumptions of management considered reasonable as of the date hereof, including that all necessary governmental and regulatory approvals will be received as and when expected. Although the Company believes that the assumptions and factors used in preparing the forward-looking information in this news release are reasonable, undue reliance should not be placed on such information. The Company disclaims any intention or obligation to update or revise any forward-looking information, other than as required by applicable securities laws.

Neither the TSX Venture Exchange nor its Regulation Services Provider (as that term is defined in the policies of the TSX Venture Exchange) accepts responsibility for the adequacy or accuracy of this release.